



LEARN AHEAD, LEAD TOMORROW!

ABOUT US

Wroclaw Business University in Applied Sciences is a private institution successfully educating future business leaders for years. Business education which is our biggest passion has continued since 1997, and since 2014 we have proudly become part of the constantly developing Vistula University Group.

ACCREDITATION & ACHIEVEMENTS



We can gladly announce obtaining a **CEEMAN International Quality Accreditation (IQA)** which is the most prestigious award in business education in Center Europe.



We have also proven our qualifications by receiving a **"Studies with the Future 2023"** certificate which recognizes the most innovative, modern, and valuable study programs at Polish universities.



CONTACT



recruitment@wab.edu.pl [en, pl]
admission@wab.edu.pl [ua, ru]



Phone +48 713 331 107
WhatsApp +48 784 367 758 [en, pl]
Telegram +48 506 396 665 [ua, ru]

FOLLOW US!



25

years of
educational
experience



50

university partners
in Erasmus
Program



70%

of classes have
practical profile



200

partnership
agreements



2

Double Degree
Programs



2000

students from
around the world

STUDY IN WROCLAW!

One of the **biggest Polish cities** with a great location.

A large academic city – there are more than **100 000 students**, **88% of them recommend** Wrocław to their friends!

The **biggest corporations** invest in Wrocław - Google, Hewlett-Packard, Volvo, Nokia, IBM, LG, McKinsey etc.

Wrocław is a **leading Polish R&D and IT center**. It is also one of the biggest startup hubs in Poland with more than 200 young technological companies, what makes Wrocław a city with the **highest startups concentration in Poland**.



An open and multicultural city with lots of restaurants, pubs, clubs, cinemas, museums, and theatres. The city is surrounded by water and there are a lot of parks, so you will always find a place to spend some quality time.



STUDY PROGRAMMES

BACHELOR - 3 years	PROGRAM	Tuition fee per year EU citizens*	Tuition fee per year NON-EU citizens
MANAGEMENT	Business Management	2400 €	3400 €
	Personal Brand Management	2400 €	3400 €
	Digital marketing – New!	2400 €	3400 €

ENGINEERING - 3,5 years	PROGRAM	Tuition fee per year EU citizens*	Tuition fee per year NON-EU citizens
COMPUTER ENGINEERING	Software Engineering	2600 €	3400 €
	Computer Networks and Cybersecurity	2600 €	3400 €

MASTER - 2 years	PROGRAM	Tuition fee per year EU citizens*	Tuition fee per year NON-EU citizens
MANAGEMENT	Brand Manager	2500 €	3400 €
	Strategic Human Capital Management	2500 €	3400 €

*The group of citizens of other countries paying the same fees as EU citizens includes citizens of Northern Europe, Western Europe, Eastern Europe, (including Ukraine, Belarus), Central Asia (Armenia, Azerbaijan, Georgia, Turkmenistan, Turkey, Tajikistan, Uzbekistan, Kazakhstan, Kirgizstan, Mongolii).

The administrative fee is:

- **120 €** – citizens of Ukraine, Belarus.
- **140 €** – citizens of Central Asia: Armenia, Azerbaijan, Georgia, Turkmenistan, Turkey, Tajikistan, Uzbekistan, Kyrgyzstan, Kazakhstan and Mongolia.
- **220 €** – citizens from the remaining countries (except Northern Europe, Western Europe, Eastern Europe (including Ukraine, Belarus), Central Asia (Armenia, Azerbaijan, Georgia, Turkmenistan, Turkey, Tajikistan, Uzbekistan, Kazakhstan, Kirgizstan, Mongolia).

ENGLISH LANGUAGE COURSES

To apply you need to have at least a **B2 level of English language**. You do not have a language certificate (such as **TOEIC, TOEFL** or **IELTS**)? Do not worry – we will check your skills. If your level is insufficient, sign up for a language course and **get ready with others for new language adventures!**

COURSE	DURATION	COST
2-months course	August-September (200 hours)	500 €
1-month course	September (100 hours)	300 €
Preparatory English course	1 year (850 hours)	2500 €

DOUBLE DEGREE PROGRAM

This program gives students opportunities to get **2 diplomas** at the same time – one from **Wroclaw Business University** and one from a **visited partner university**. During your studies abroad you will continue to study in the English language and **no extra fees** are required! Participants are selected based on their GPA, English fluency (at least B2 level), and recruitment interview. Due to this, you may as well receive an Erasmus+ scholarship.



Students of the Bachelor's program in **Tourism & Leisure** (in Polish) in the 2nd or 4th semester may go to the partner university to study for one semester in **Tourism Industry & Hospitality** abroad.




Students of the Engineering program **Computer Engineering** may participate as well. They study at a partner university for one year in **Software Engineering** or **Communications Technology**.

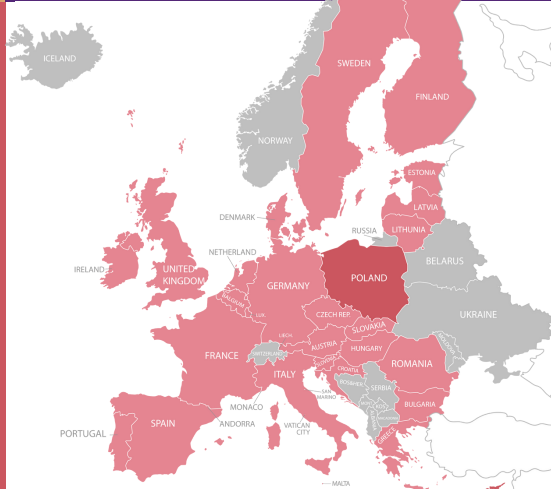
ERASMUS+



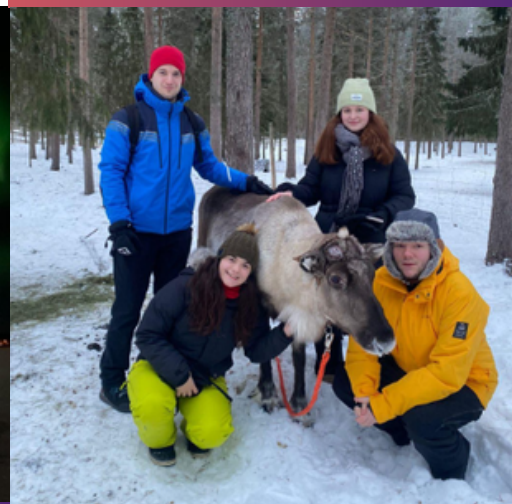
> 50
partner
universities




Unforgettable experience
and an amazing opportunity
to make friends for life!




Scholarship during
studying at a partner
university




Possibility to study
1–2 semesters in another
European country




Boost your resume to stand
out in the job market



CAREER OFFICE

It supports students in the **job or internship** searching process. You may here get help in preparations for a job interview, and write proper resumes, which will intrigue employers. The Office organizes meetings and workshops with business leaders as well. Moreover, you can take part in ambitious projects like **Entrepreneurship Incubator** or become a **Career Ambassador**.



WELCOME POINT

International Student Advisor helps students in everyday life matters and **supports freshmen in adaptation at the university**. Here you can receive information about insurance, long-term transportation tickets, temporary residence card, etc. Here you can also find support in the implementation of your ideas for activities.



ADAPTATION & INTEGRATION

We know that the first steps in adult, university life may be tough, so every academic year at the beginning of the semester we organize **Orientation Day**. During this event, we will tell you about the university's and its departments' functions, how the online student system works, how to use student inbox, and more. At the university happenings, students can make **new friends and get to know different cultures from around the world!**



SCHOLARSHIPS & DISCOUNTS

Students may receive a **Rector's scholarship (for outstanding academic achievements), a scholarship for people with disabilities, or a one-time allowance** during their studies. More information about scholarships can be found in the Student Financial Service Office. Thanks to the student ID card students may get many discounts, e.g. **tickets for trams, buses, and trains 51% off**.

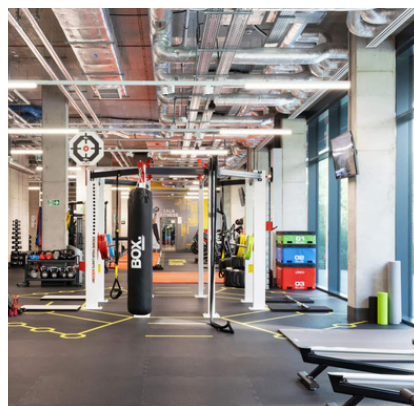
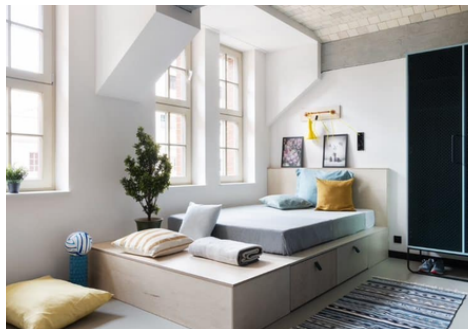


PRACTICAL CLASSES

- **Projects**
- **Field practices**
- **Case studies**
- **Event organization**
- **Laboratories**
- **Visits to companies**
- **Workshops**
- **Participation in trade fairs**



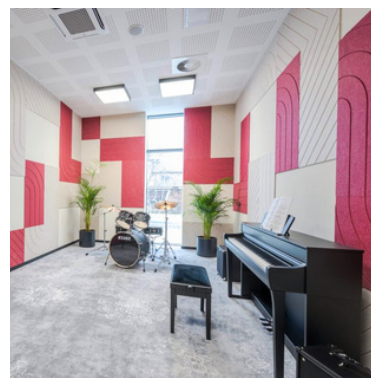
BASECAMP



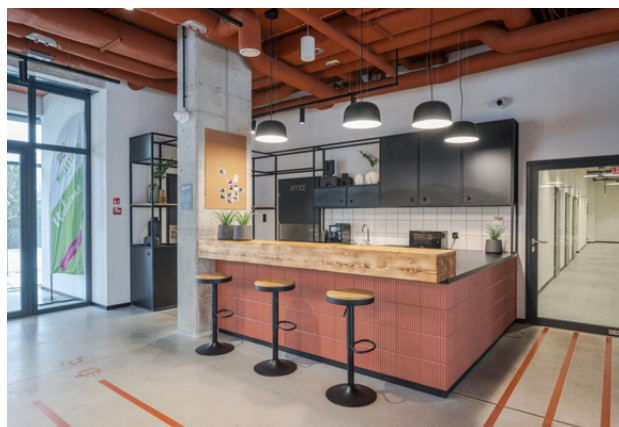
DORMITORIES



MILESTONE



STUDENT DEPOT



During your studies, you can live in Wroclaw in one of the modern private dormitories. They offer **single rooms, lofts, and community rooms for 2, 3, 4, or 8 people**. Our students get a **discount** for booking and rent fees with a special promo code. If you want to know more about it, please write an e-mail to welcome@wab.edu.pl.



Basecamp



Milestone



Student Depot

STUDENT LIFE

Being a student is not only about lectures and classes. It is also about more **interesting and inspiring extra activities**. Take part in events like **International Week, Cooking Day, or Great Leaders Meet-up**. If you are an active, and creative person who wants to do something special for the student community, join our **Student Council** or **Student Club**. Meet people from around the world, share various experiences, and get a new perspective!





HOW TO APPLY?



Application process is easy and simple:

- 1** Register at www.apply.vistula.edu.pl and upload required documents:
 - a passport
 - educational documents
 - language certificate if it is available
- 2** Once your application has been evaluated, you will receive feedback and an offer letter, a study contract and an invoice for payment.
- 3** Pay the tuition fee and administrative fee, receive the documents of Acceptance.
- 4** Apply for visa and come to Wroclaw!
- 5** Submit your original documents to the Recruitment Office (room 1/3) within 2 days after arrival to Poland.

SCAN ME



Apply now!

SCAN ME



Special offers